

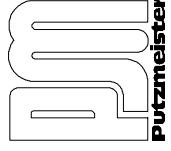
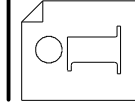
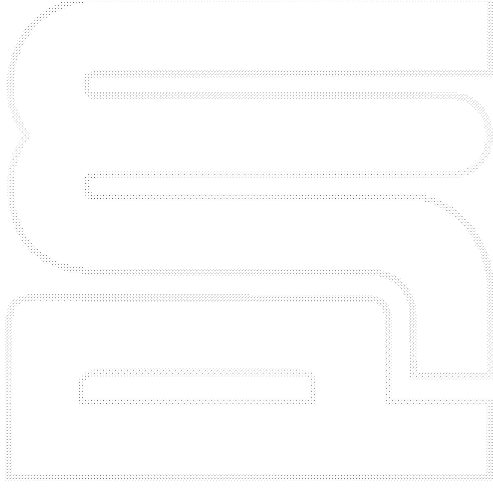
1	-----	1	Druckring		Thrust ring		Aro de presión
2	-----	1	Distanzscheibe		Spacer disc		Placa distanciadora
3	032204007	8	Sechskantschraube	M16x70 DIN931-8.8	Hexagon head cap screw		Tornillo de cab.exagonal
4	036509009	8	Sicherungsscheibe	VS16	Lock washer		Arandela de seguridad
5	229488005	1	Verschleißbrille	DURO22	Spectacle wear plate		Placa-gafas
6	251031006	1	Verschleißring	DURO22	Wear ring		Anillo desgaste
7	252898002	1	Druckring	Ø 200 NBR	Thrust ring		Aro de presión
8	441110	1	Dichtmasse	310ml	Sealing compound		Masa de junta

- ENDE -

- END -

- FIN -

- FIN -



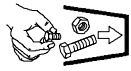

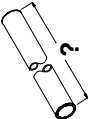
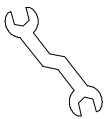
Verschleißteilsatz Ø 200-260 DURO22
 Set of wear parts Ø 200-260 DURO22
 Jeu de pièces d'usure Ø 200-260 DURO22
 Juego-piezas de desgaste Ø 200-260 DURO22

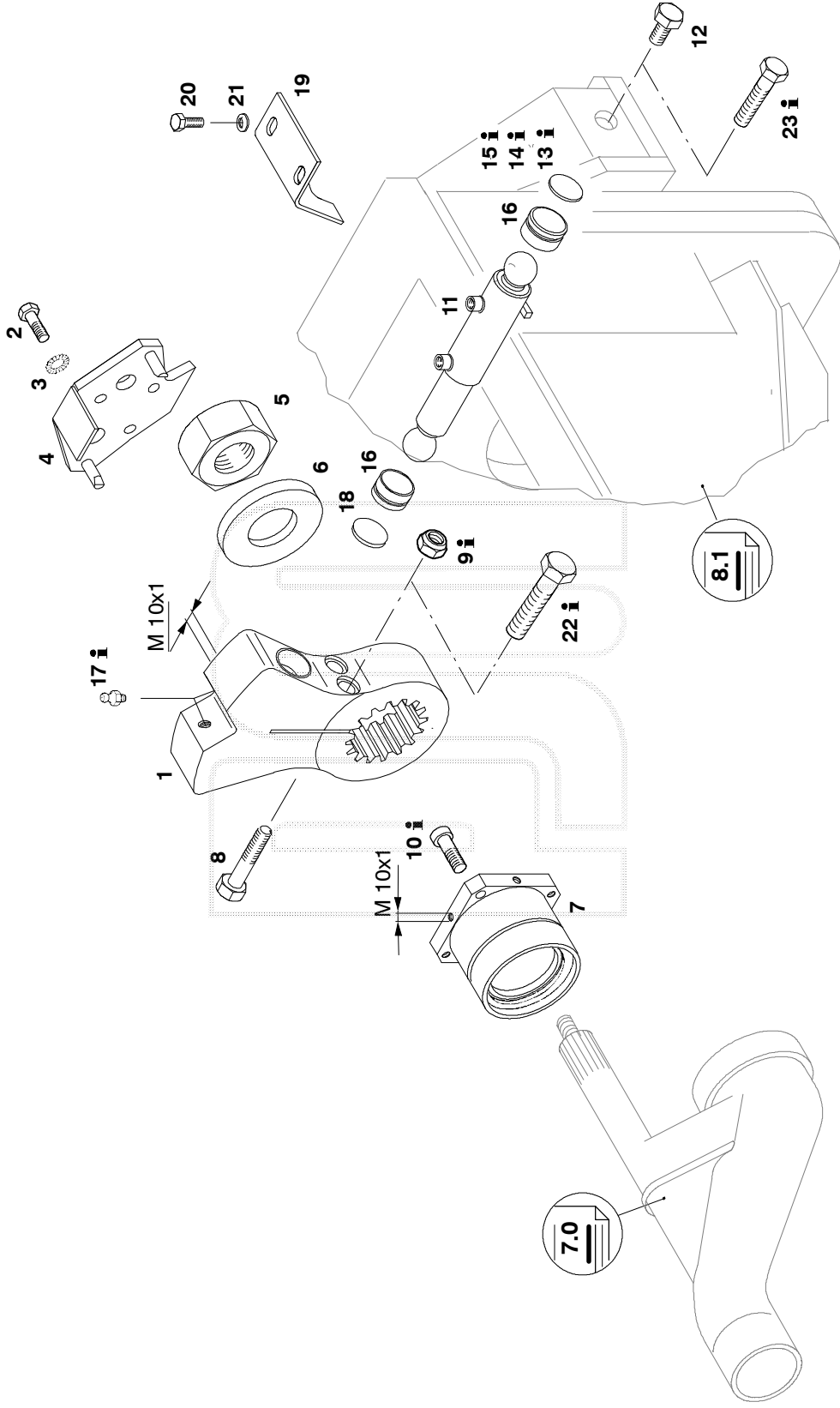
252041008



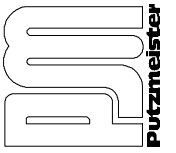
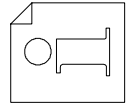
7.1

13051-0404

	i
	9, 10
	13, 14, 15
	17, 22, 23



 **7.3**
16402-0206
TD: Schönbeck



S-Rohr-Antrieb
S-pipe drive
Entraînement tuyau en S
Accionamiento tubo S

424884

1 - **2**

7.3
16402-0304