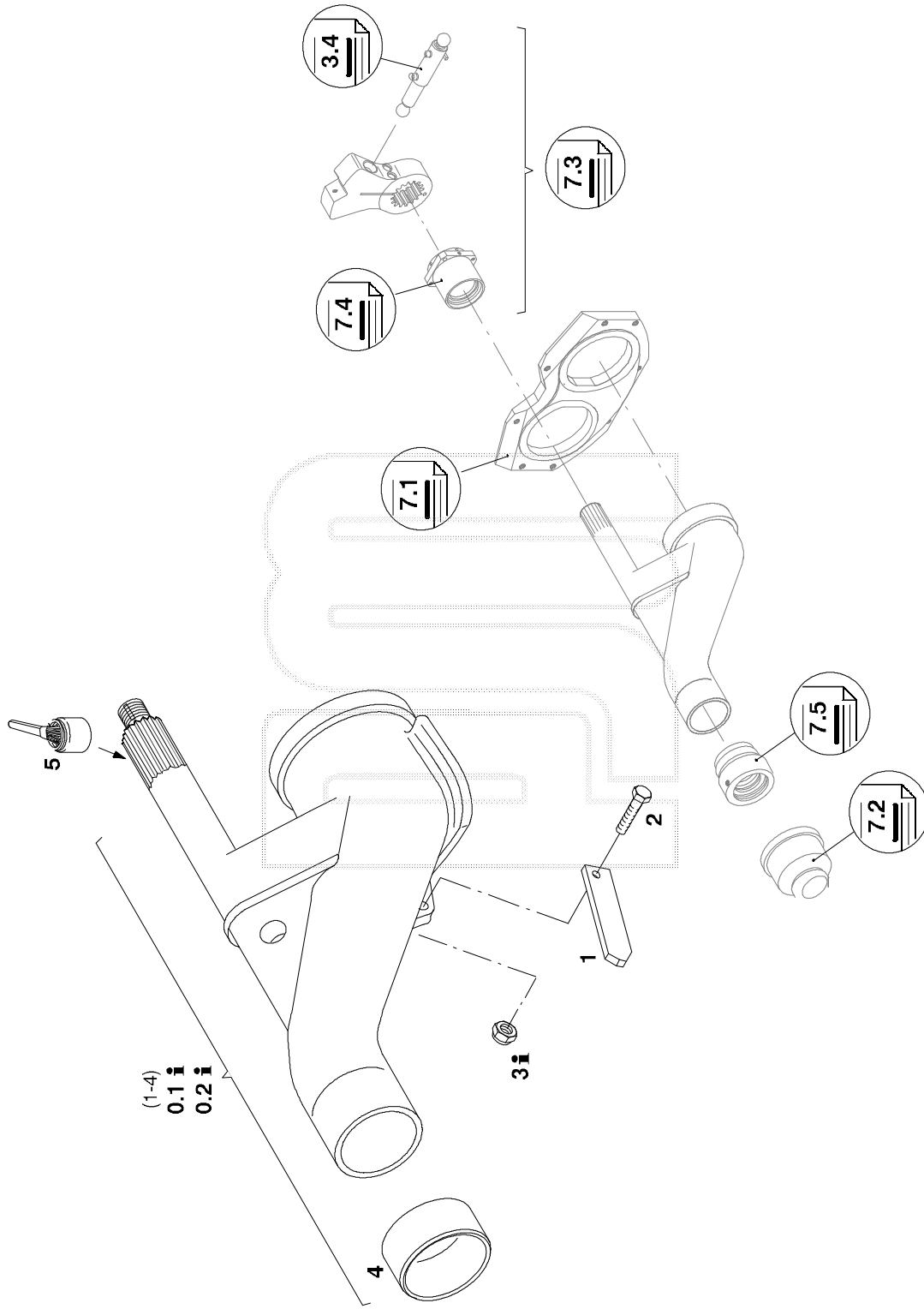
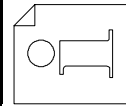


i	
0.1, 0.2	
3	



7.0
13210-9706
TD: Kühfuß



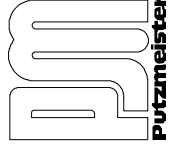
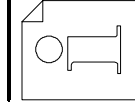
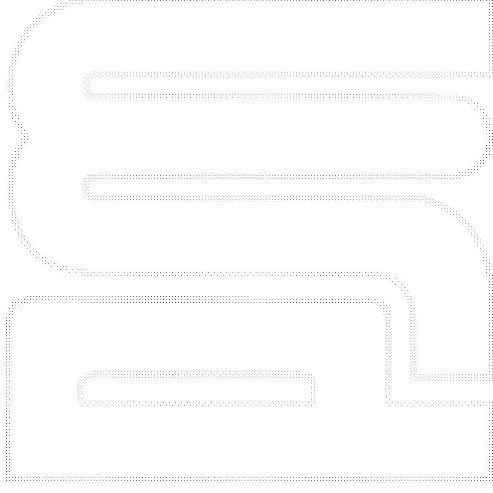
PM
Putzmeister

S-Rohr S2018PN
S-pipe S2018PN
Tuyau en S S2018PN
Tubo S S2018PN

1 - 2

7.0
13210-0009

0.1	251014007	1	S-Rohr	S2018PN	S-pipe	Tuyau en S	Tubo S
0.2	402866	1	S-Rohr	S2018PN	S-pipe	Tuyau en S	Tubo S
1	220219008	1	.Schürfleiste	M12x40 DIN933-8.8	.Scraping strip	.Bande de raclage	.Listón rascador
2	032379000	1	.Sechskantschraube	M12 DIN985-8.	.Hexagon head cap screw	.Vis à tête hexagonale	.Tornillo de cab.exagonal
3	034107005	1	.Sechskantmutter, selbstsi		.Hexagonal nut, self-lock	.Ecrou hexagonale frein	.Tuerca exag., autofrenant
4	228383004	1	.Verschleißhülse		.Wear sleeve	.Douille d'usure	.Casquillo de desgaste
5	360022003	1	Montagepaste	450g	Anti-seize compound	Pâte anti-grippage	Pasta antigripado
			- ENDE -		- END -	- FIN -	- FIN -



S-Rohr S2018PN
S-pipe S2018PN
Tuyau en S S2018PN
Tubo S S2018PN